

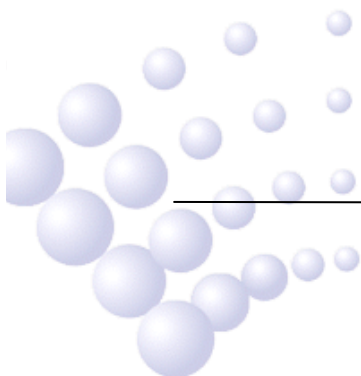
**C-9201 Conventional Manual Call Point
Installation and Operation Manual
(Issue 1.1, March 2004)**



GST  **Global System Technology PLC**

CONTENTS

I	General.....	1
II	Technical Specifications.....	1
III	Structure.....	1
IV	Mounting and Wiring.....	2
V	Applications.....	3



I General

C-9201 Conventional Manual Call Point (hereinafter called the MCP) is installed in public places. When fire is confirmed manually, press the glass on the MCP, alarm signal can be sent to the controller. After receiving the alarm signal, the controller will show the alarm message, and sound alarm. The pressed glass can be resumed by special tools.

II Technical Specifications

1. Operating Voltage: DC24V
2. Static Current: 0mA
3. Alarming Current $\leq 30\text{mA}$

(Note: In static state, the MCP can work at 5V~28V. The alarming current depends on the current limit of the controller. It's not allowed to power the detector directly by DC24V. Otherwise the MCP will be blown as a result of without current limiting resistor.)

4. Wiring: Polarized two-wire to compatible controller
5. Type of Initiating Part: Reusable
6. Initiating Mode: Pressing the glass manually
7. Reset Mode: Manually resuming by a sucker
8. Fire Indicator: Red. It's not lit in normal condition and constantly lit after alarming.
9. Operating Environment: Temperature: $-10^{\circ}\text{C}\sim+50^{\circ}\text{C}$
Relative Humidity $\leq 95\%$, no condensation
10. Dimension: 90mm \times 90mm \times 46.5mm

III Structure

Appearance of the MCP is shown in Fig.1.

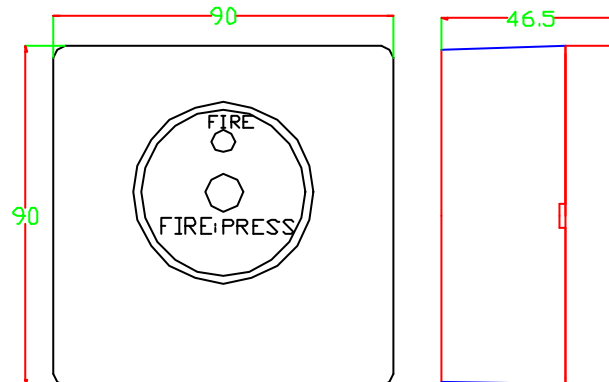


Fig.1 Appearance

IV Mounting and Wiring

1. Before installation, check whether the enclosure, pressing glass and labels are complete.
2. The base and the MCP are plugged together.
3. The MCP can be surface mounted or flush mounted.
 - a. Surface mounting can adopt open mode, installing the base on B-9312 back box as shown in Fig.2, or by embedded mode, the hole distance of the embedded box is 52~68mm (refer to Fig.5). Installation is shown in Fig.3.
 - b. Flush mounting can adopt YM-02A embedded box, as shown in Fig.4

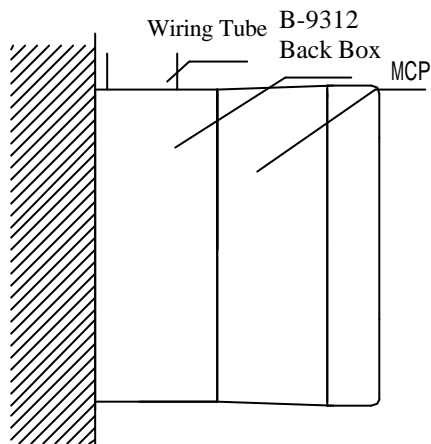


Fig.2 Wiring tube surface-mounted

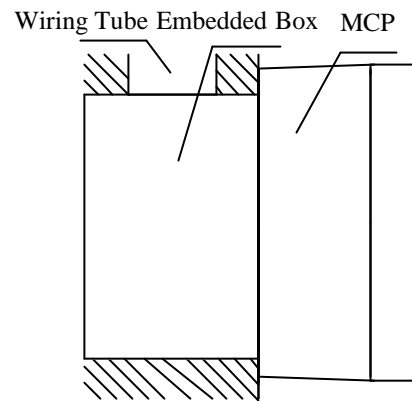


Fig.3 Wiring tube embedded

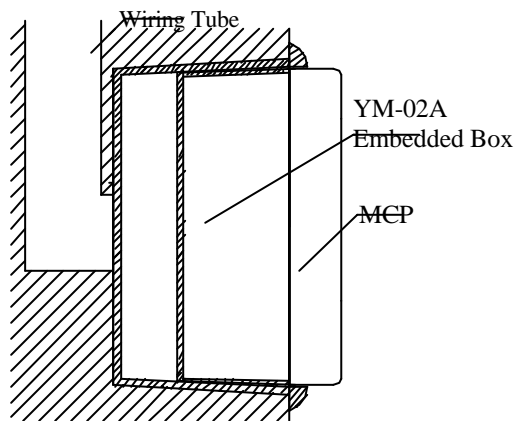


Fig.4 Flush mounting

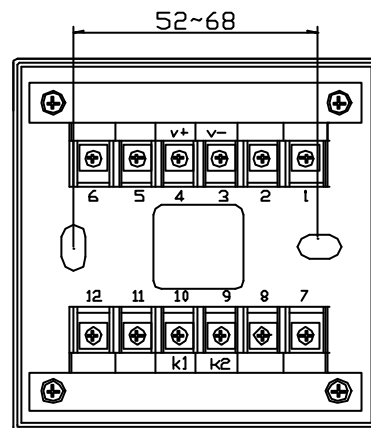


Fig. 5 Terminals

4. Terminals of the MCP are shown in Fig.5.
V+, V-: Input Signal, connecting with compatible controller or the MCP before it.
K1, K2: Normally open output terminals.
5. Wiring: Twisted pair with cross section $\geq 1.0\text{mm}^2$.

V Applications

The MCP can be used together with different conventional detectors in compatible controller system to detect fire.

1. When P-9907 Active End of Line Unit is connected to the end of output loop, an IN5819 Diode should be connected to the detector base.
 - a) The active end of line unit can be used as a detector base, that is, a conventional detector can be installed on it. System composition is shown in Fig. 6.

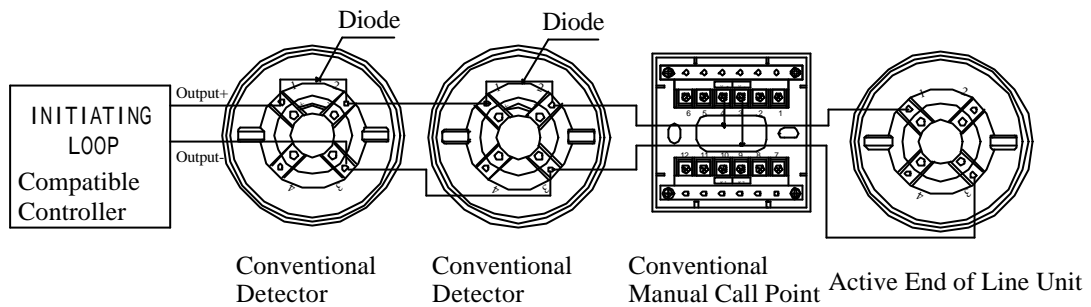


Fig. 6 System wiring

- b) When the active end of line unit is not used as a detector base, system application is shown in Fig. 7.

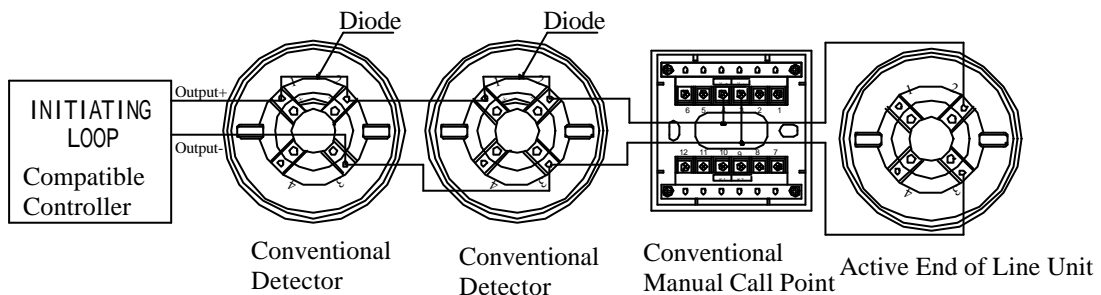


Fig. 7 System application

2. When the active end of line unit is not used in the output loop, a 4.7k Ω resistor can be connected to the end of loop. 1N5819 Diode is not connected to the detector base. System application is shown in Fig. 8.

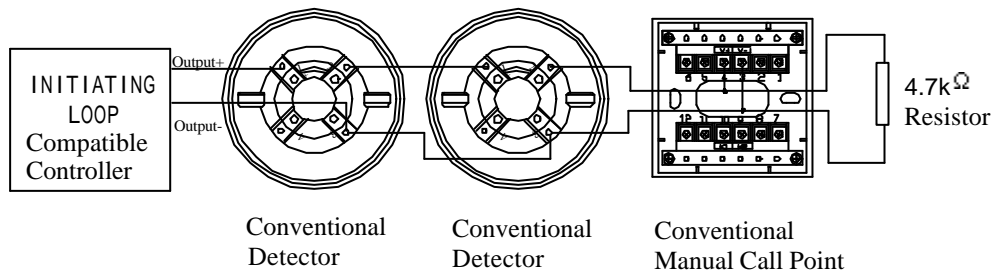


Fig. 8 System application